



PHILIPS

Professional lighting

Industry

Enhancing **safety** **and productivity**

Industry Lighting Catalog 2016

Transform

your industrial spaces
with lighting

- Enhance productivity
- Increase safety of resources
- Achieve sustainability goals
- Ensure wellbeing of employees
- Differentiate your brand



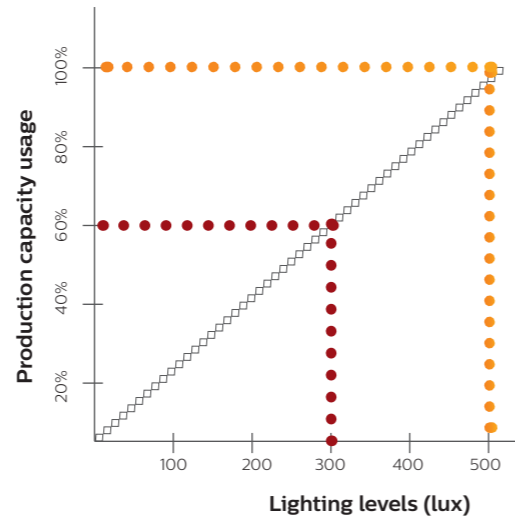
Lighting that

Improves performance

Quality lighting contributes positively to task performance in terms of higher speed and lower failure rate. It improves, health and wellbeing, increases safety and lowers absenteeism.

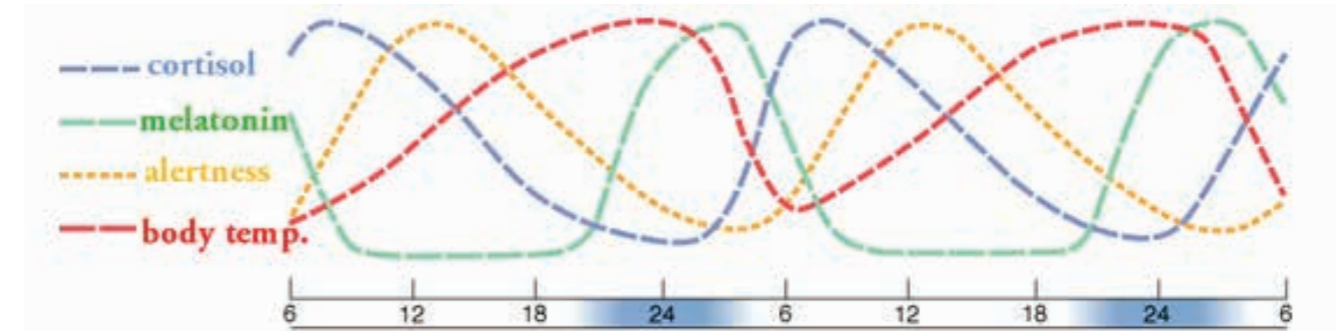
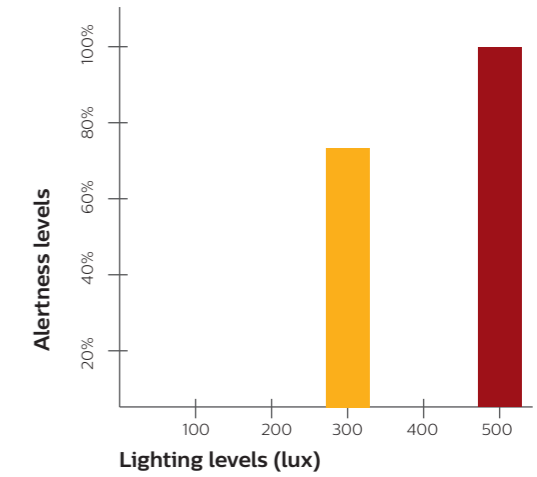
Good lighting can increase productivity by up to 8%*.

The graph depicts increase in lux levels can improve focus and result in higher output



Works as per circadian rhythm

- Light affects biological clock, moods and alertness
- Artificial light has simulating effect on body, same as natural light



Double plot (2 x 24 hrs) of typical circadian rhythms of body temperature, melatonin, cortisol and alertness in humans for a natural 24 hour light/dark.

Creates positive working environment

- Motivates people
- Creates inspiring working environment
- Makes the space look attractive
- Provides tidy and clean atmosphere
- Makes work a pleasant activity



Increases safety and lowers accidents

With quality light, many industrial accidents can be prevented. Uniform lighting levels and glare free light prevents workers from getting distracted.

Up to 52%* accidents can be reduced with quality light.



*Conditions apply



Lighting has evolved

Lighting, over the years has evolved into a tool that not only lits up spaces but also helps reduce energy consumption, safeguard resources and provides positive working environment.

Light for work

Efficient and sustainable

Lighting that was used for the work spaces is now more efficient and sustainable. With sustainable lighting solutions, up to 80% energy can be saved. Also the ROI of these products is very fast as compared to traditional lighting solutions.

Light for space

Impactful and innovative

Every space has its own requirement and hence lighting need. New customised solutions create impact for every space.

Light for well being

Designed around you

With connected lighting and controls, lighting can be used as an effective tool for the wellbeing of people.

Philips
leads
the way



Enhancing wellbeing and productivity of employees



Wellbeing and productivity

We work with experts and use our research on the effects of light on wellbeing and productivity to help businesses develop solutions optimized for tasks at hand.



Enhanced experience

We understand the profound effect lighting has on body, moods and alertness. Our wide range of solutions work as per circadian rhythm improving the experience of employees working in industrial spaces.



Sustainable lighting solutions

Our eco friendly solutions emit less heat and deliver quality light. It helps reduce the load on the environment and provide sustainable work places to employees.



Providing **control and flexibility** to business



Smarter ways of working

Our connected lighting offers great control to the administrators which enables people to regulate lighting.



Maintenance free

Our technologically advanced products enable remote detection of faults through an easy and simple interface.



Energy saving and optimization

By using controls, we can reduce static load and improve dynamic efficiency.

Lighting can also be integrated basis occupancy, daylight and time logic.

Right Lighting

for different areas within industrial facility



Process areas



Warehouses



Offices



Industry retail



Roads



Area lighting



Facades



Lighting solutions

Industry lighting

Process areas

Perfect lighting for **error free manufacturing**

Adaptable lighting systems ensure that right light is available for specific tasks, even when production cells are reconfigured.

We develop lighting solutions that create **safer work environments and reduce eyestrain** by providing the right level of light.

We deliver **exceptional levels of visual clarity**, that make spaces safe, easy to use and **optimal for observation and inspection**.

Recommended products for process areas



MaXolid

Intelligent luminaire delivers high savings and is direct replacement for conventional highbays



LEDtube

Integrates in existing luminaires and saves 50%* energy.



GreenBay

Integrally designed versatile lighting solution. Provides flexibility in usage- can be used as recessed or suspended solution



EnduraLED Waterproof

Reliable and affordable LED waterproof system that delivers up to 40%* energy savings



EnduraLED Wellglass

Innovative LED well glass luminaire for direct replacement of 70W HPSV/125 HPMV conventional fixtures



GreenPerform batten

Surface mounted innovative solution for conventional twin lamp batten. Designed to be a direct replacement for conventional batten providing energy savings of more than 30%*.

*Conditions apply



Bright, glare free light
that provides visual clarity

We ensure that you get **right quantity and quality of light**.

Our luminaires provide **good vertical illuminance to read information on storage items**.

On the other hand **right optics lit up areas with and without rack**.

Our new system is controlled by an intelligent wired lighting control system, which **adjusts the intensity of the bulbs** according to the amount of daylight available and **dims up lamps to 100% level only when the aisle is occupied**.

Recommended products for warehouses



MaXolid

Intelligent luminaire delivers high savings and is direct replacement for conventional highbays



LEDtube

Integrates in existing luminaires and saves 50%* energy.



GreenBay

Integrally designed versatile lighting solution. Provides flexibility in usage- can be used as recessed or suspended solution



EnduraLED Waterproof

Reliable and affordable LED waterproof system that delivers up to 40%* energy savings



GreenPerform batten

Surface mounted innovative solution for conventional twin lamp battens. Designed to be a direct replacement for conventional battens providing energy savings of more than 30%*.

*Conditions apply



Lighting solutions that provide personnel with **comfort and control**

Energize minds, enhance focus and concentration, optimize for a healthy environment with power of light. Our smart green office solutions help you **create healthy and happier workplaces.**

With Philips connected lighting, workers can control their office lighting with their smart phones and facility managers can get **real-time information on energy use and room occupancy.**

Power over Ethernet i.e. one cabling network for lighting and IT, **helps lower installation costs.**

Our lighting systems can provide **individual control to the employees** helping them personalize the lighting at their desks.

Recommended products for offices



FullGlow

Beautifully designed luminaire is bound to delight the corporates with refreshing and comfortable experience through its pure form and glare free light.



GreenPerform batten

Surface mounted innovative solution for conventional twin lamp battens. Designed to be a direct replacement for conventional battens providing energy savings of more than 30%*.



Dayline

Efficient luminaire saves upto 65%* energy as compared to 2 x PLL 36W luminaire. It ensures long and maintenance free life and comes with DALI dimming options.



LEDtube

Integrates in existing luminaires and saves 50%* energy



Stratus

Suspended LED lighting luminaire seamlessly integrates with the interiors. Its end to end mounting feature is a delight for corporate offices.

*Conditions apply





Lighting solutions

Industry lighting

Industry retail

Lighting that is **engaging** and gives a **competitive edge**

We offer **excellent color rendering** that makes merchandise look simply irresistible and makes the consumer spend quality time in the showroom. It also **helps attract more customers on the selling floor**.

Recommended products for industry retail areas



GreenLED ultima

A slim downlighter with high lumen efficacy of 100 lm/W*. It displays true colors with its high color rendering index of 80 and has a long life of 40000* hours.



GreenLED i

A breakthrough offering which combines modern product design, the latest LED technology and reliable heat management to deliver a long lasting efficient solution for office and retail spaces.



LuxSpace

LED downlights with superior aesthetics and build quality suitable for applications that require a green general lighting solutions.



LEDtube

Integrates in existing luminaires and saves 50%* energy

*Conditions apply



Durable outdoor lighting that provides optimum visibility and safety

Our **full cut off luminaires** ensure that light pollution and veiling glare are reduced.

We ensure that right quantity as well as quality of light is delivered and is **aligned with traffic density and speed.**

With our connected lighting solution, users can **control and monitor lighting performance on the go including fault detection from remote locations**

Recommended products for roads



GreenLine Xtra

Urban looks for city roads offering best in class energy savings. Existing luminaires can be easily upgraded to new LED technology with minimum changes in existing installation.



GreenLine

Philips road lighting luminaire with unique peanut lens ensuring uniform distribution, higher spacing between poles and maintenance free system



Solar street lighting range

Ideal for lighting the area in remote locations where the electricity is unavailable or erratic. Even in urban areas, this range finds great usage to reduce dependency on conventional power and contribute towards green energy.



Lighting to create safer campuses

Uniform area lighting can be done with **reduced static load and better lighting appearance.**

Connected lighting solutions provide **additional energy efficiency of up to 30%*.**

Recommended products for area lighting



Tempo LED

Comes in compact housing and delivers significant energy savings. This luminaire lasts up to 10 *years.



Uniflood

Delivers superior brightness and savings. It is a substitute for halogen and 70W MHNTD lighting system.



EnduraLED Bulkhead

Innovative and reliable LED solution that fits seamlessly in a variety of applications. This luminaire can be installed as ceiling mounted and wall mounted.

*Conditions apply



Lighting solutions

Industry lighting

Facade

Lighting solutions that differentiates your brand

We offer benefits of LED lighting with flexibility of **choosing the right color** to highlight the industrial structures.

This **helps build and differentiate your brand** in competitive market.

Recommended products for facades



ColorReach Powercore

Combines all benefits of LED based lighting and control in an elegant fixture specifically designed for large scale installations.



ColorReach Compact Powercore

Outputs thousands of lumens and throws light hundreds of feet, delivering true LED-based illumination for large scale structures.



ColorBlast Powercore

Combines rich, saturated, wall-washing color and color-changing effects with simplified installation.



ColorGrazing EC Powercore

Delivers 241 lumens per foot while consuming just 10 W maximum.



ColorGrazing QLX Powercore

Features outstanding light output at reduced power levels for the right balance between performance and price.



ColorGrazing MX Powercore

Features the most light output in our line of color-changing LED grazing fixtures, for high-intensity multi-story façade and surface illumination.



ColorBurst Powercore

High-output, exterior-rated LED lighting fixture designed for accent and site lighting.



ColorBurst Compact Powercore

High-output, exterior-rated LED lighting fixture designed for accent and site lighting.

Industry **Toolkit**

Table of Contents

Product	Application	Pg
Dayline	Office	46
EnduraLED Bulkhead	Area lighting	48
EnduraLED Waterproof	Process areas and warehouses	50
EnduraLED Wellglass	Process areas	52
FullGlow	Office	54
GreenBay	Process areas and warehouses	56
GreenLEDi	Industry retail	58
GreenLED Ultima	Industry retail	60
GreenPerform Batten	Office, Process areas and warehouses	62
LED tube	Process areas, Office and industry retail	64
LuxSpace	Industry retail	66
MaXolid	Process areas and warehouses	68
Stratus	Office	70
Tempo LED	Area lighting	72
Uniflood	Area lighting	74
GreenLine Xtra	Roads	76
Solar street lighting	Roads	78



Efficient lighting. More Savings

High energy savings

Dayline offers high energy savings up to 65%*

High lumen efficacy

With efficacy of up to 100 lm/W, the luminaire is highly efficient

No maintenance

With Dayline, operational costs are reduced as it requires no maintenance

Key features

- High quality light, CRI=80
- Long life of up to 50,000 hours
- Soft opal diffuser provides high visual comfort
- Eco friendly

Technical specifications

Type	RC240B LED
System Wattage (W)	30, 42
Lumen Output (lm)	3000, 3600
System Efficacy (lm/W)	up to 100
Color Temperature (K)	3500, 4000
CRI	80
Housing	Polyester power coated
Cover	Acrylic
Mounting	Recessed
THD	<10%
PF	>0.9
Operating Voltage	220-240V , 50 / 60 Hz

Dayline

Dayline is an efficient luminaire which saves up to 65%* energy as compared to 2 x PLL 36W luminaire. It ensures long, maintenance free life and comes with DALI dimming options. Dayline is a perfect combination of innovative design and efficient LED technology.



*Conditions apply



EnduraLED Bulkhead

An innovative and reliable LED solution that fits seamlessly in a variety of applications. This luminaire can be installed as ceiling mounted and wall mounted. It serves as a simple energy efficient alternative to CFL/ incandescent bulkhead luminaires.

Versatile lighting solution

80%* energy savings

The luminaire offers high energy savings without compromising on lighting quality

IK09 certified- Impact resistant

Minimises commonly observed glass breakage issues either due to transit or at site

IP66- Protected against dust and water

Ideal for rough industry environments. Offers stable and consistent performance

Key features

- Long life of 50000* hours
- Suitable for tough conditions
- Eco friendly
- Versatile solution- can be mounted on ceiling as well as wall

Technical specifications

Type	WT202W LED6S CW PSU S1 PC
System Wattage (W)	9
Lumen Output (lm)	600
System Efficacy (lm/W)	70 (approx)
Color Temperature (K)	6500
CRI	>80
Housing	High pressure die cast aluminium
Cover	Polycarbonate
Mounting	Wall, Ceiling
THD	<20%
PF	>0.9
Operating Voltage	120V-277V





Efficient, Reliable and Robust

Up to 40%* energy savings

Long life

Robust housing

This luminaire is highly efficient. It saves up to 40%* energy.

It has a long life of up to 50000* hours.

Sturdy housing structure helps maximize inherent benefits of LED

Key features

- System efficacy >80 lm/W
- Housing and cover made of virgin polycarbonate
- Installation possible with conduit/ pipe/ surface mounting
- Dedicated optics provide precise symmetric light distribution

Technical specifications

Type	WT550C LED355 CW PSU S1 PC
System Wattage (W)	42
Lumen Output (lm)	3500
System Efficacy (lm/W)	83
Color Temperature (K)	6500
CRI	>80
Housing	Virgin Polycarbonate
Cover	Virgin Polycarbonate
Mounting	Surface/ Suspended
THD	<20%
PF	>0.95
Operating Voltage	140V-270V

EnduraLED Waterproof

EnduraLED Waterproof is a reliable and affordable LED waterproof system that delivers up to 40%* energy savings compared to conventional lighting products. The reliable and robust housing structure helps to maximize inherent LED advantage of energy saving combined with long life.

*Conditions apply





Efficiency, durability and performance

>60%* energy savings

The luminaire offers high energy savings without compromising on lighting quality

IK 08- Vandal protected front diffuser

Minimises commonly observed glass breakage issues either due to transit or at site

IP 66- Protected against dust for high performance

Ideal for rough industry environments. Offers stable and consistent performance

Key features

- System efficacy of 90 lm/W
- Pressure die cast aluminium housing
- Supplied with adjustable mounting bracket and loop in loop out provision (optional)
- UV stabilized acrylic diffuser

Technical specifications

Type	BY200P LED 27S CW PSU S2 PC	BY200P LED 35S CW PSU S2 PC
System Wattage (W)	29	39
Lumen Output (lm)	2700	3500
System Efficacy (lm/W)	93	90
Color Temperature (K)	4000,6500	6500
CRI	80	80
Housing	High pressure die cast aluminium	High pressure die cast aluminium
Cover	Tempered glass	Tempered glass
Mounting	Dedicated mounting bracket (CRCA)	Dedicated mounting bracket (CRCA)
THD	≤10%	≤10%
PF	>0.95	>0.95
Operating Voltage	160 V AC-280 V AC	160 V AC-280 V AC

EnduraLED Wellglass

Innovative LED well glass luminaire for direct replacement of 70W HPSV/125 HPMV conventional fixtures. EnduraLED Wellglass has the potential to save >60 %* energy without compromising on lighting parameters.



Applications

Process areas

*Conditions apply



FullGlow

FullGlow is a beautifully designed luminaire which is bound to delight the occupants with refreshing and comfortable experience through its pure form and glare-free light. It comes in two versions - standard and high efficiency. With up to 50%* energy savings and maintenance free operation, this product is an owner's delight.

Inspiring and efficient

Minimalistic yet bold

Impactful and bold design fits seamlessly within the ceiling.

Improve well being of resources

Higher CRI ensures ideal working conditions promoting people well being.

Flexible, comes in multiple range

This luminaire comes in two versions, standard and high efficiency, offering flexibility for varied application.

Key features

- 50%* energy savings
- High quality light, CRI=80
- No maintenance

Technical specifications

Type	FullGlow (Standard)	FullGlow (High efficiency)
System Wattage (W)	29	38
Lumen Output (lm)	2800	3500
System Efficacy (lm/W)	>90	>90
Color Temperature (K)	4000,6500	4000,6500
CRI	80	80
Housing	Metallic CRCA powder coated	Metallic CRCA powder coated
Cover	Acrylic	Acrylic
Mounting	Recessed	Recessed
THD	<10%	<10%
PF	>0.9	>0.9
Operating Voltage	220-240V , 50 / 60 Hz	220-240V , 50 / 60 Hz





Reliable, efficient and versatile

Day light harvesting and occupancy sensing

The inbuilt intelligence through DALI compatibility enhances the energy saving potential

Direct replacement for Metal halides

The luminaire is one to one replacement for up to MH 250W solution

Multiple mounting options

Multiple mounting possible with special surface KIT, recessed KIT and suspended KIT

Key features

- >50%* energy saving
- Long life of 50000* hours
- Maintenance free
- Eco friendly

Technical specifications

Type	GreenBay Gen II
System Wattage (W)	70, 105, 140
Lumen Output (lm)	7200, 11000, 14500
System Efficacy (lm/W)	>100
Color Temperature (K)	5700
CRI	70
Housing	High pressure die cast aluminium
Cover	Tempered glass
Mounting	Universal with dedicated mounting KITS
THD	<20%
PF	>0.9
Operating Voltage	120V-277V

GreenBay

GreenBay is an integrally designed, versatile lighting solution from Philips to address different lighting requirements within industrial spaces. From under canopies to truss mounted medium bay luminaires, GreenBay can be used across recessed or suspended mounted applications.



- Applications
- Process areas
- Warehouse



Compact and efficient

Compact integral design

With integrated driver, this luminaire is easy to install

High savings

This luminaire offers 50%* savings over CFLs

Highly efficient

GreenLEDi comes with advanced optics for glare free lighting

Key features

- Long life of 50000* hours
- No maintenance
- Eco friendly

Technical specifications

Type	GreenLEDi
System Wattage (W)	600, 900, 1200, 1500, 2000
Lumen Output (lm)	10, 15, 18, 24, 32
System Efficacy (lm/W)	>60
Color Temperature (K)	3000, 4000, 6500
CRI	>70
Housing	Heat sink - die cast
Cover	High quality diffuser
Mounting	Recessed
THD	<20%
PF	>0.9
Operating Voltage	220V-240V/50, 60Hz

GreenLEDi

GreenLEDi range is a breakthrough offering which combines modern product design, the latest LED technology and reliable heat management to deliver a long lasting efficient solution. Offering substantial energy savings compared to CFL/halogen, good light quality, complete stylistic freedom and significant maintenance savings, the product is an ideal value for money and replacement for conventional CFL options.





GreenLED Ultima

Green LED Ultima is a slim downlighter with high lumen efficacy of 100 lm/W. It displays true colors with its high color rendering index of 80 and has a long life of 40000 hours.

Performance in slim design

Slim design

This luminaire adds aesthetic value to the space with its slim design

High savings

It offers 77%* savings over CFLs

Highly efficient

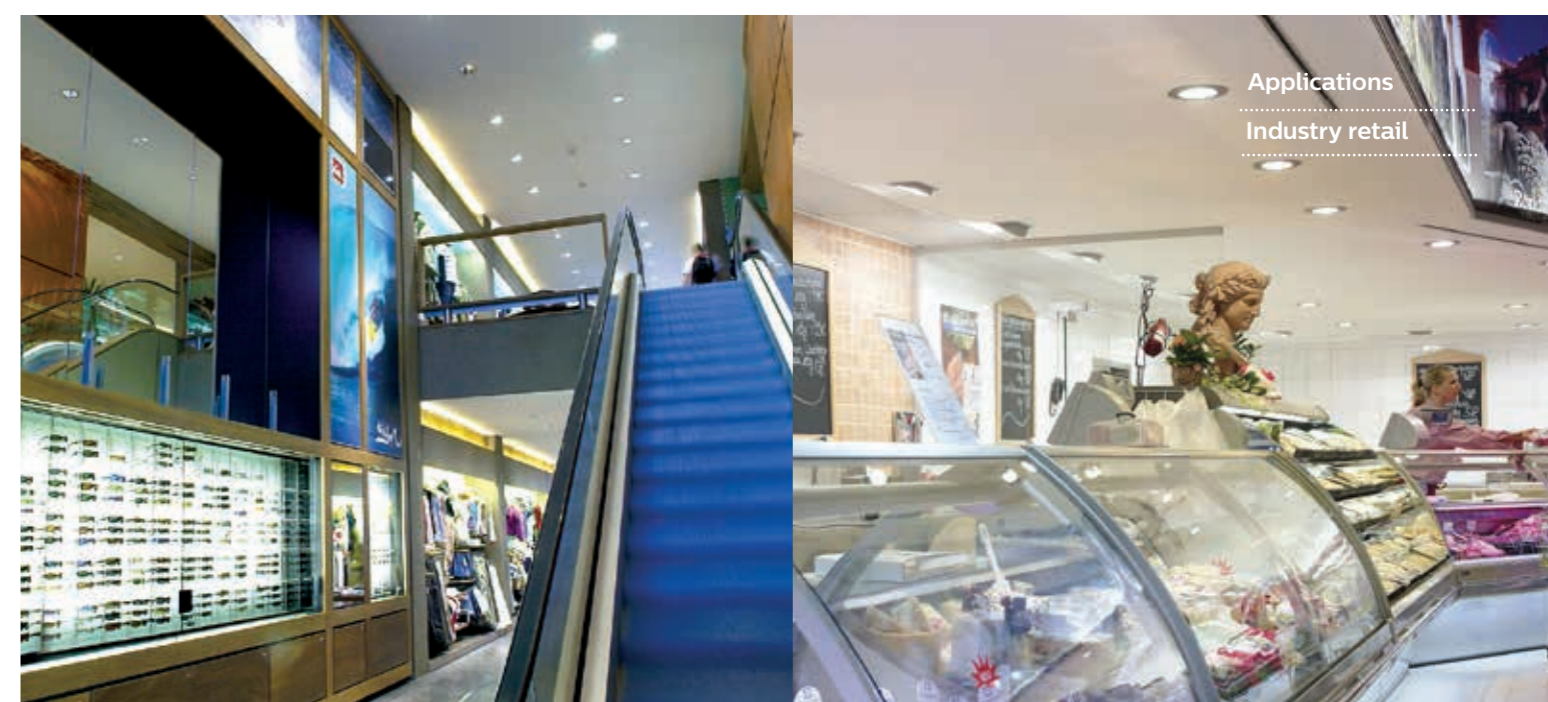
GreenLED Ultima is highly efficient with lumen efficacy of 100 lm/W

Key features

- Long life of 40000* hours
- High quality light, CRI=80
- Eco friendly

Technical specifications

Type	GreenLED Ultima
System Wattage (W)	600, 1000
Lumen Output (lm)	6.5, 10
System Efficacy (lm/W)	100
Color Temperature (K)	3000, 4000, 6500
CRI	>80
Housing	Plastic body, reflector PC, steel clips
Cover	High quality diffuser
Mounting	Recessed
THD	<20%
PF	>0.9
Operating Voltage	220V-240V/50, 60Hz





GreenPerform Batten

GreenPerform LED batten is an innovative solution for conventional twin lamp battens. It is designed to be a direct replacement for conventional battens providing energy savings of more than 30%* with no compromise on lighting performance. Integrally designed and developed by Philips, this product provides seamless adoption towards industry leading technology.

Affordable and efficient

High system efficacy

The luminaire has high system efficacy of 100 lm/W

Attractive payback

GreenPerform quickly covers its cost in less than 3 years

Eco friendly

The luminaire has no mercury content making it sustainable and green lighting solution

Key features

- 30%* energy saving
- Long life of 50000* hours
- Maintenance free

Technical specifications

Type	BN 208C Gen II
System Wattage (W)	36
Lumen Output (lm)	4200
System Efficacy (lm/W)	115
Color Temperature (K)	4000, 5000, 6500
CRI	>80
Housing	CRCA sheet steel
Cover	Frosted acrylic
Mounting	Mounting bracket extra
THD	<10%
PF	>0.95
Operating Voltage	140V-270V



Applications
 Process areas
 Warehouse



LEDTube

Philips Essential LEDtube integrates LED light source with frosted cover design into traditional linear fluorescent form. It consumes only 20W and offers energy saving up to 50%*.

High return on ROI

High savings

Essential LEDtube offers high energy savings of up to 50%*

Attractive Payback

It offers high ROI and covers Wits cost in 1 year*

Eco friendly

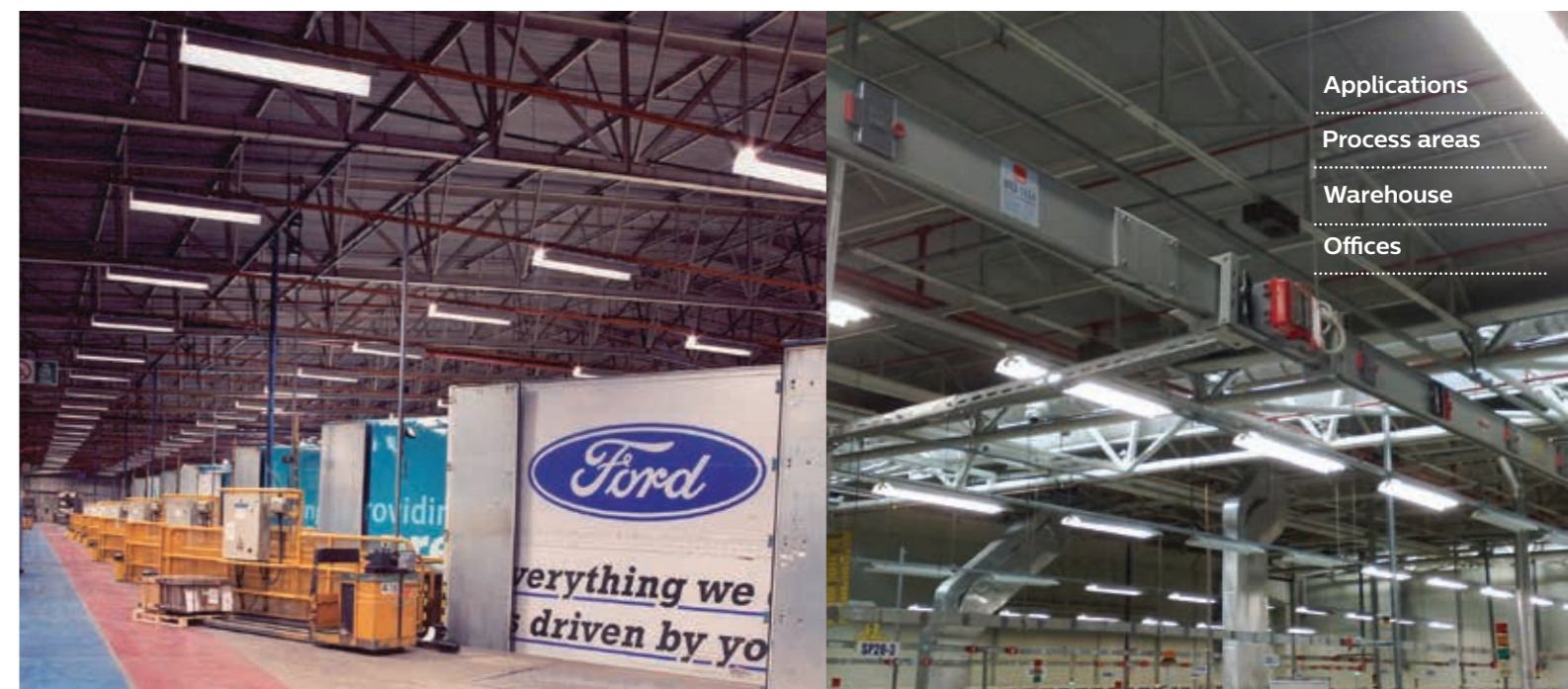
With no mercury content the LEDtube is eco friendly and environment friendly

Key features

- No glare discomfort and uniform light distribution
- No external driver required
- Long life of 30000* hours

Technical specifications

Type	
System Wattage (W)	20
Lumen Output (lm)	1600
System Efficacy (lm/W)	80
Color Temperature (K)	6000K
CRI	80
Housing	Polycarbonate
Cover	Polycarbonate
Mounting	Batten mounted on wall
THD	<20%
PF	>0.95
Operating Voltage	140V-270V



- Applications
- Process areas
 - Warehouse
 - Offices



High efficiency, visual comfort and a stylish design

Highly efficient

The highly energy-efficient LuxSpace makes it possible to achieve extremely low power consumption without sacrificing light quality.

Latest technology

LuxSpace features the latest LED technology and delivers reliable light output, stable color performance and high color rendering (Ra = 80).

Fit and forget

All LuxSpace models offer a compact look and feel and a perfect fit with easy installation, with a long lifetime of 50,000 hours.

Key features

- Highly efficient, efficacy >90 lm/W
- Compact look and feel
- Premium material and finish

Technical specifications

Type	BBS478, BBS488/489, BBS498/499, BBS496
System Wattage (W)	8, 13, 28, 40.5
Lumen Output (lm)	600, 1000, 1500, 2000, 3000
System Efficacy (lm/W)	>90
Color Temperature (K)	3000, 4000
CRI	>80
Housing	Steel and polycarbonate
Cover	Option of various attachments
Mounting	Recessed
THD	<20%
PF	>0.9
Operating Voltage	220V-240V/50, 60Hz

LuxSpace

LuxSpace provides the perfect combination of efficiency, light comfort and design, without compromising on lighting performance. It offers a wide choice of options for creating the desired ambience.





MaXolid

MaXolid highbay is an intelligent, direct HID highbay replacement which saves 50%* energy vs. conventional industrial highbay. The inbuilt intelligence through DALI compatibility enhances the energy saving potential as a result of daylight harvesting and occupancy sensing.

Combining the best features like instant start, long life, controllability and high efficiency, Maxolid provides significant and sustained energy savings over the product life cycle.

Inbuilt intelligence for higher returns

Day light harvesting and occupancy sensing

The inbuilt intelligence through DALI compatibility enhances the energy saving potential

Direct replacement

MaXolid highbay is an intelligent direct HID replacement which saves 50%* energy.

High system efficacy

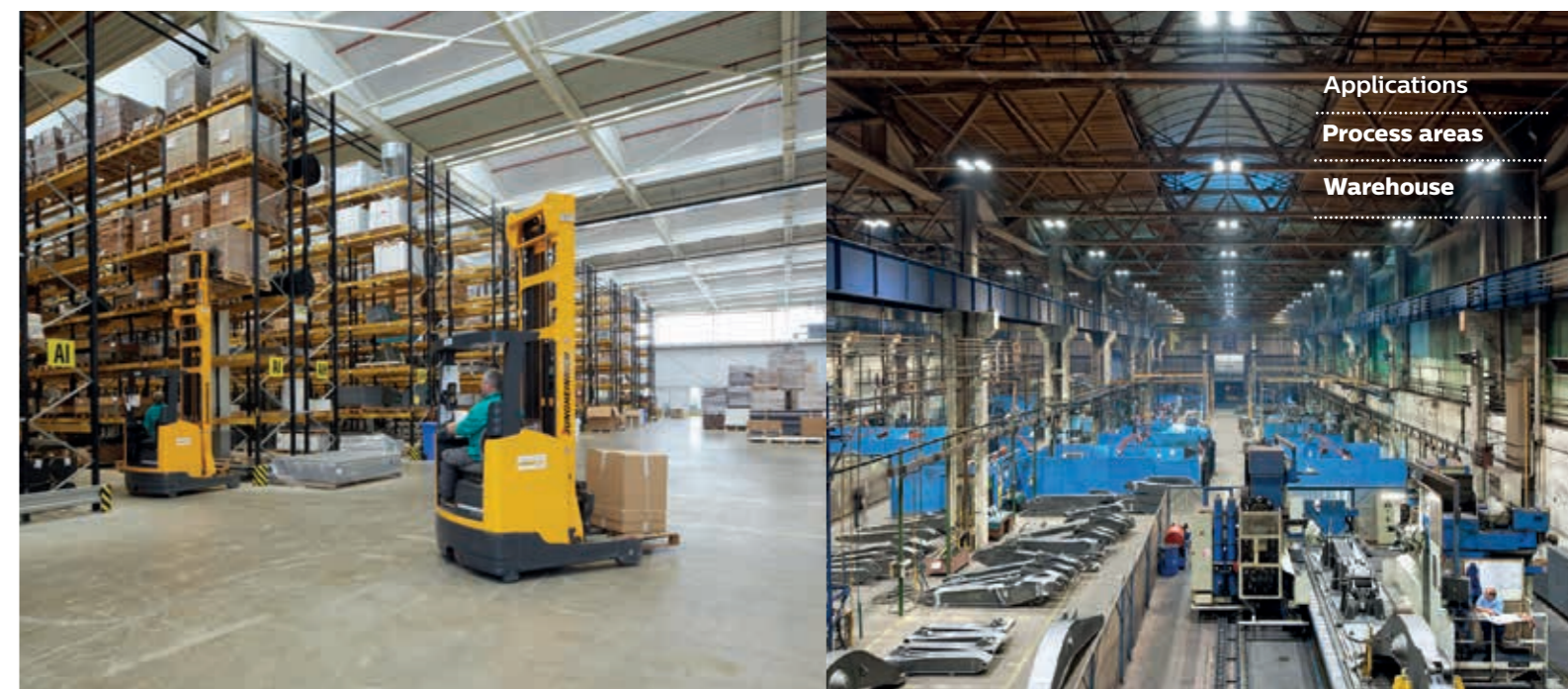
With efficacy of more than 100 lm/W, the luminaire is highly efficient

Key features

- System efficacy >100 lm/W
- Luminaire housing made of high pressure die cast aluminium
- Installation possible with hook or threaded rod
- Dedicated optics provide precise symmetric light distribution

Technical specifications

Type	BY688P
System Wattage (W)	137
Lumen Output (lm)	14500
System Efficacy (lm/W)	105
Color Temperature (K)	6500
CRI	>80
Housing	High pressure die cast aluminium
Cover	Tempered glass
Mounting	Factory fitted eye bolt
THD	<20%
PF	>0.95
Operating Voltage	120V-277V





Modern and contemporary

Volumetric light

With its uplighting feature and advanced technology, Stratus provides uniform lighting throughout the space, resulting in a better balance of luminance through the visual field.

Sleek aesthetic

Minimalistic design with sleek aesthetics, that blends easily with interiors and enhances the appeal of your spaces without compromising on light output.

Continuous mounting

Continuous end to end mounting arrangements help in providing uniform lighting across the room or spaces.

Key features

- Saves up to 30%* energy
- Long life of 50000* hours
- High quality light, CRI=80

Technical specifications

Type	Stratus
System Wattage (W)	54
Lumen Output (lm)	4400
System Efficacy (lm/W)	>80
Color Temperature (K)	4000, 5000
CRI	>80
Housing	Extruded aluminium
Cover	High efficiency opal diffuser
Mounting	Suspended
THD	<20%
PF	>0.9
Operating Voltage	220V-240V/50, 60Hz

Stratus

Stratus is a sleek, suspended up-down LED lighting luminaire which seamlessly blends with office interiors. Up-down lighting can be easily controlled individually and in conjunction. Additional features include linear cascading, which ensures elegant and continuous line of light.





Compact and robust

Compact

Incorporates LED light sources, optical system, heat sink and drivers into one compact housing

Long life

Efficient heat sink ensures long luminaire life

High system efficacy

With efficacy of more than 100 lm/W, the luminaire is highly efficient

Key features

- Consistent light output
- Wall, ceiling and surface mounting with various adjustment
- Low maintenance
- Eco friendly

Technical specifications

Type	BVP410
System Wattage (W)	105, 120, 140, 172, 210, 240
Lumen Output (lm)	10700, 12500, 14400, 17200, 21000, 24000
System Efficacy (lm/W)	>100
Color Temperature (K)	5700
CRI	>70
Housing	High pressure die cast aluminium
Cover	Glass
Mounting	Wall
THD	<20%
PF	>0.90
Operating Voltage	240V AC, 50 Hz

Tempo LED

Philips Tempo LED is a general purpose LED flood lighting luminaire for various lighting applications, such as area lighting, sports lighting, bill board, facade, industry area, security lighting and other general applications. The Tempo LED flood light incorporates LED light sources, optical system, heat sink and drivers into one compact housing which ensures that LED's have a long life. Tempo LED takes advantage of the LED technology which provides energy savings and a longer lifetime, bringing area lighting into a new era.



Applications

Area lighting



Uniflood

Philips Uniflood is an integral flood light with driver inside a PDC housing. It is highly efficient, reliable and sturdy compared to similar metal halide floodlights.

It delivers significant energy savings compared to conventional floodlights. The luminaire comes with a choice of lumen pack to suit various applications with different beam, as well as a universal mounting bracket for easy angle adjustment.

More Brightness. More Savings

High savings

This luminaire is equivalent of 80W ordinary LED floodlight, delivering more than 50%* savings

Longer life

With uniform heat distribution, the life of the luminaire is enhanced

Higher lighting levels

Uniflood uses advanced optics which ensures optimum lighting levels.

Key features

- High lumen efficacy, 90lm/W
- IP66 - protection against dust and water
- Zero maintenance

Technical specifications

Type	BVP410
System Wattage (W)	35,60
Lumen Output (lm)	3500,7000
System Efficacy (lm/W)	>100
Color Temperature (K)	5700
CRI	>70
Housing	High pressure die cast aluminium
Cover	Glass
Mounting	Bracket
THD	<20%
PF	>0.90
Operating Voltage	240V AC, 50 Hz



Applications
Area lighting



GreenLine Xtra

Maintenance free LED luminaire with urban looks for city roads offering best in class energy savings. Existing luminaires can be easily upgraded to new LED technology with minimum changes in present installation.

Build to last, designed to save

Long life

GreenLine Xtra offers long life of up to 10 years*

Uniform lighting levels

The luminaire lits every corner of the road in a uniform way making people feel safe during the late hours

Dust and waterproof protection

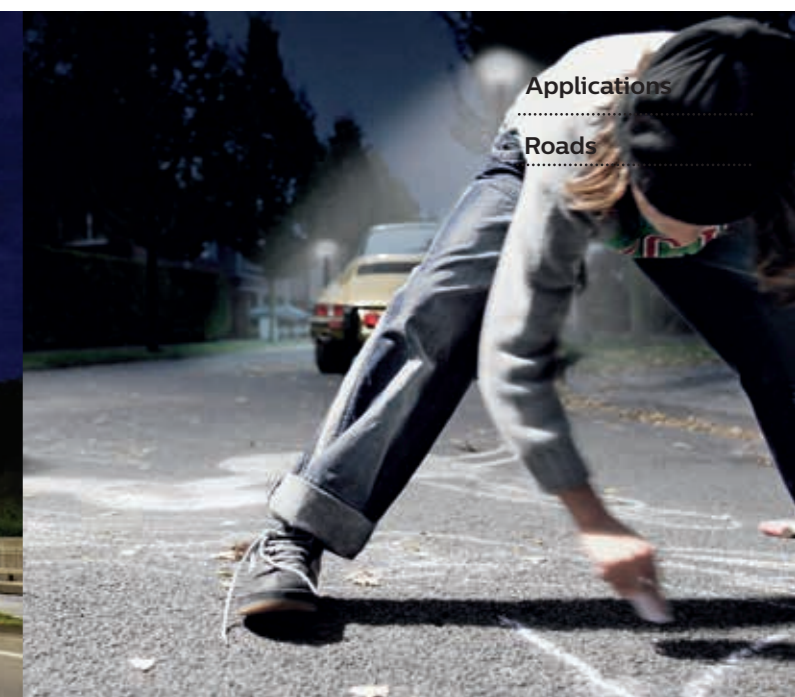
With IP65 rating, GreenLine Xtra is ideal for tough weather conditions

Key features

- Upto 50%* energy saving
- Options of cover glass and polycarbonate cover
- Meets IS1944 lighting requirement for A1/ A2 category road
- Complies to IEC60598 and IS10322

Technical specifications

Type	BRP322 S3	BRP322 S3	BRP322 S3	BRP322 S3
System Wattage (W)	106	121	140	175
Lumen Output (lm)	10000-11000	11700-12800	14000-14700	17200-17700
System Efficacy (lm/W)	up to 100	up to 100	up to 100	up to 100
Color Temperature (K)	5000	5000	5000	5000
CRI	70	70	70	70
Housing	High pressure die cast aluminium	High pressure die cast aluminium	High pressure die cast aluminium	High pressure die cast aluminium
Cover	Polycarbonate HT glass cover	Polycarbonate HT glass cover	Polycarbonate HT glass cover	Poly carbonate HT Glass cover
Mounting	Pole mounted	Pole mounted	Pole mounted	Pole mounted
THD	<20	<20	<20	<20
PF	0.90	0.90	0.90	0.90
Operating Voltage	120-270V	120-270V	120-270V	120-270V



Applications

Roads



Efficient and environment friendly

No running cost

This luminaire runs with natural source of energy, hence there is no electricity cost.

IP65 protection

The luminaire lits every corner of the road in a uniform way making people feel safe during the late hours

Green solution

Runs 100% on solar energy.

Key features

- No line voltage, trenching and metering
- No power outages
- Battery backup for cloudy and rainy days
- Easy to install

Technical specifications

Type	BRP403, BRP402, BRP 020, BRP202
System Wattage (W)	8W, 12W, 15W, 20W, 21W, 28W, 43W
Lumen Output (lm)	80-4300
System Efficacy (lm/W)	100
Color Temperature (K)	6500
CRI	70
Housing	High pressure die cast aluminium
Cover	Polycarbonate HT glass cover
Mounting	Pole mounted
THD	<20%
PF	>0.90
Operating Voltage	1220V-240V

Solar street lighting range

Solar powered outdoor lighting products are ideal for lighting the area in remote locations where the electricity is unavailable or erratic. Even in urban areas, these find great usage to reduce dependency on conventional power and contribute towards green energy. Reliable and long life makes this solution effective in fulfilling our present and future lighting requirements.



Lighting **Systems**

The power of control

Lighting systems from Philips help people feel **comfortable, productive, and safe**. They **beautify spaces and transform environments**. Our lighting systems combine world-class traditional and LED luminaires with analog and digital controls that let you **deliver exactly the right illumination experiences**, whenever and wherever you need them.

As leaders in the LED technology revolution, we create lighting systems that prioritize energy efficiency, sustainability, and operational cost reduction. We focus on improving the livability and effectiveness of indoor and outdoor environments, providing everything from functional general illumination to spectacular color-changing experiences that **enhance your brand, encourage social interactions, and revitalize communities**.

At Philips, we have the deep expertise and range of systems to **transform your goals into effective lighting applications**. You can count on us to understand your goals, and to help you specify and execute flawless solutions that **ensure ideal lighting** for your specific lighting needs.

Enhance the total value of your facility

With information managed by the lighting system, you can **give your employees the right to control their “Right Light”** at their work areas to suit their individual preferences. By enhancing light quality and comfort, and by giving employees more control over their environment, lighting systems can help **make your workplace more pleasing and more productive.**

To make things easier, we’ve created one simple industry lighting package, by **combining state-of-the-art, energy saving LED luminaires with wireless technology and controls.** It’s a bundle that is **easy to order, install and commission – designed to enhance light quality and safety and reduce cost and carbon footprint.** In short, through one smart system we can make it easy for you – both now and in future.



Movement detection and zoning management

Energy saving can be improved through **flexible, programmable zoning,** which allows you to adapt your plans easily. Key applications include warehouses, air compressor rooms, pumping stations, auto/semi-auto production areas, auxiliary plants and corridors.



Daylight harvest

System can adapt illuminance as preset, based on daylight to give a **constant working illuminance, saving energy significantly.** Key applications include workshop or room equipped with windows. Luminaires can be dimmed according to ambient light levels.

Easy to use lighting controls

Our innovative, wireless system **reduces installation time** and complexity by avoiding control wires. We have made system **configuration extremely simple too.** Everything can be done wirelessly, using a Philips remote control, with **minimum installer input.**

Brighter spaces, smart zones

Presence detection and smart zoning gives you the flexibility to set lighting at a comfortable, dimmed background level, which then automatically switches to 100% when movement is detected. Daylight harvesting can also be used to save up to an additional 20% in energy.

Reduced maintenance

With the addition of zoning, occupancy detection and controls that extend their lifetime further, even greater energy and cost reductions are possible.

Health and wellbeing

Better light quality means increased comfort. When people feel better they work better with efficiency and higher productivity.

Reducing carbon footprint

Our efficient and green lighting system offers energy savings of up to 50% which reduces costs as well as carbon emission.

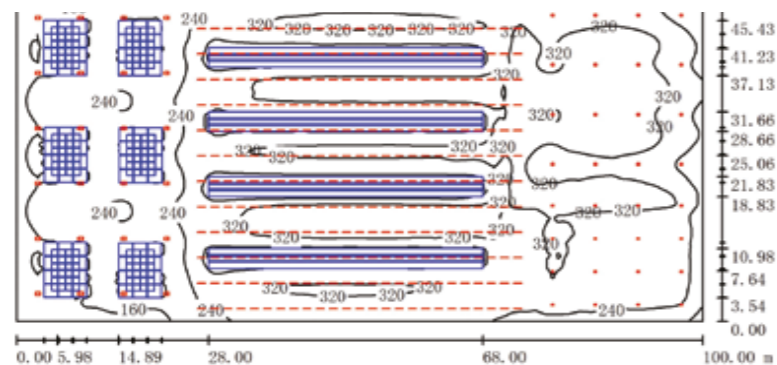
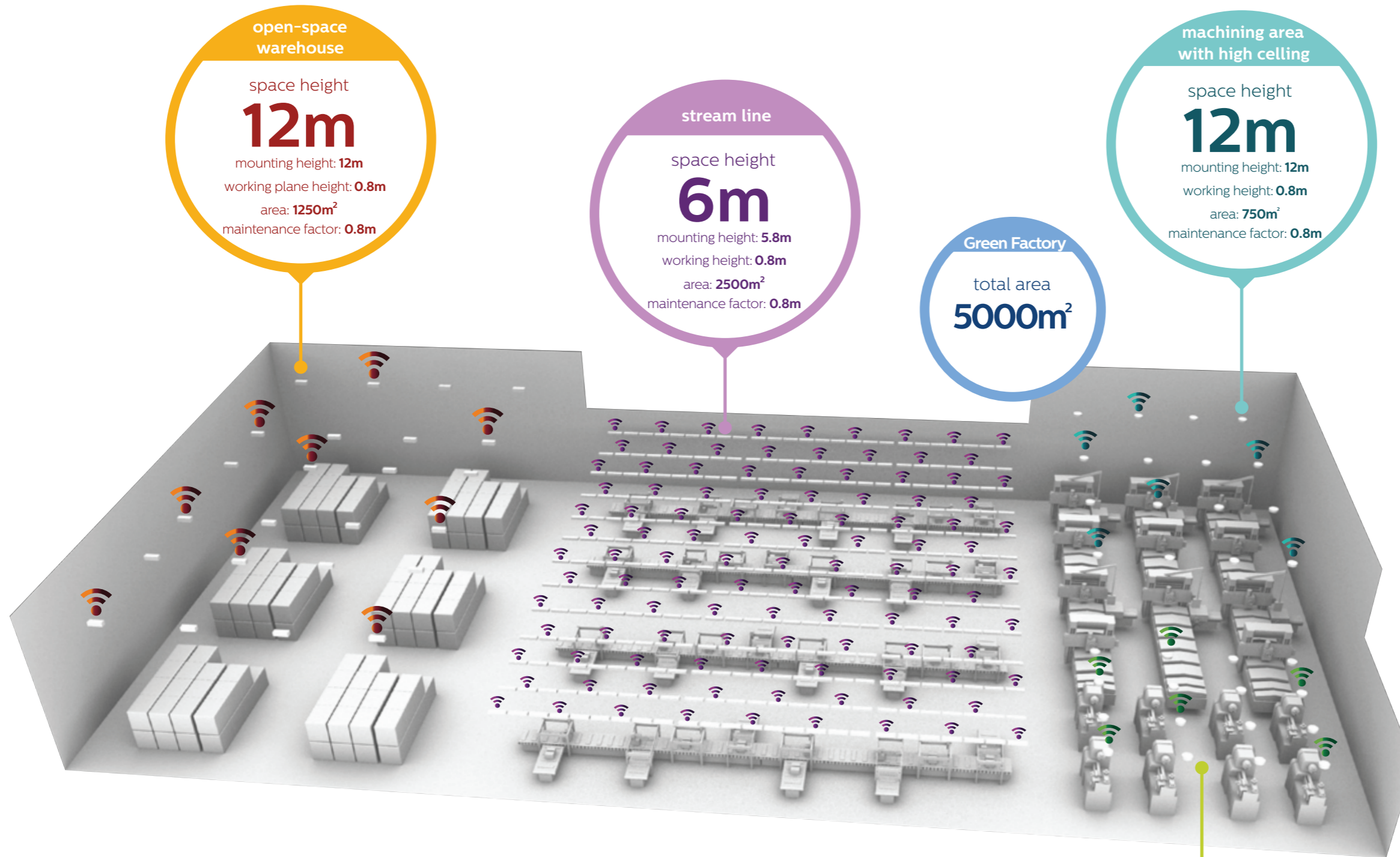
Controls without the complexity

Our wireless system combines everything together in one bundle and removes complexity from installation, commissioning and day-to-day operation.

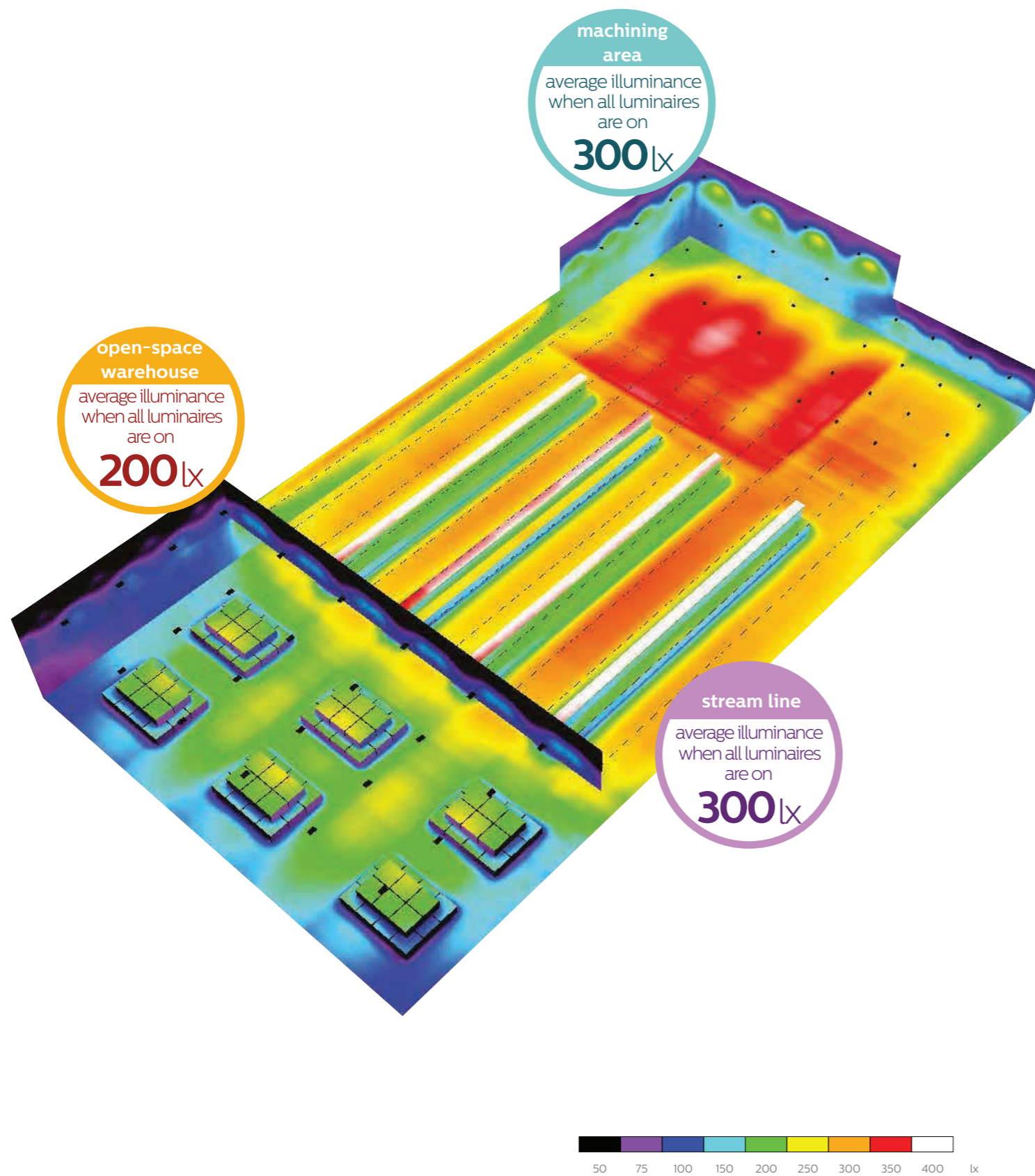
Achieving business goals

Our lighting innovations are firmly focussed on enhancing your business efficiency.

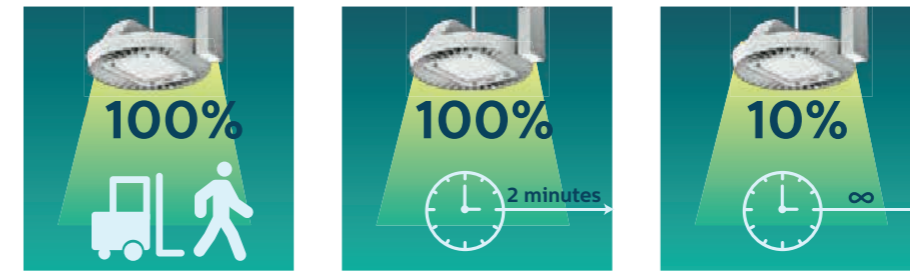
Lighting effect simulation in green factory



Lighting hotspot simulated in factory



ROI analysis (simulated case)

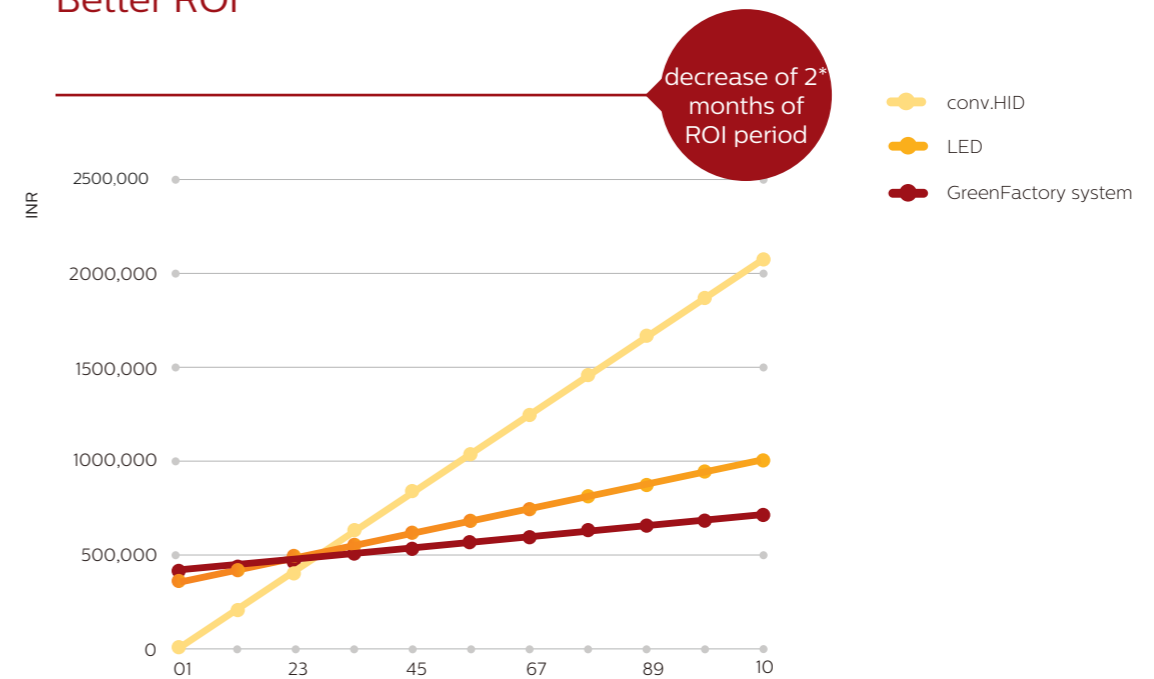


when no movement is detected, the system will dim from 100% to 10% in 2 mins without turning off

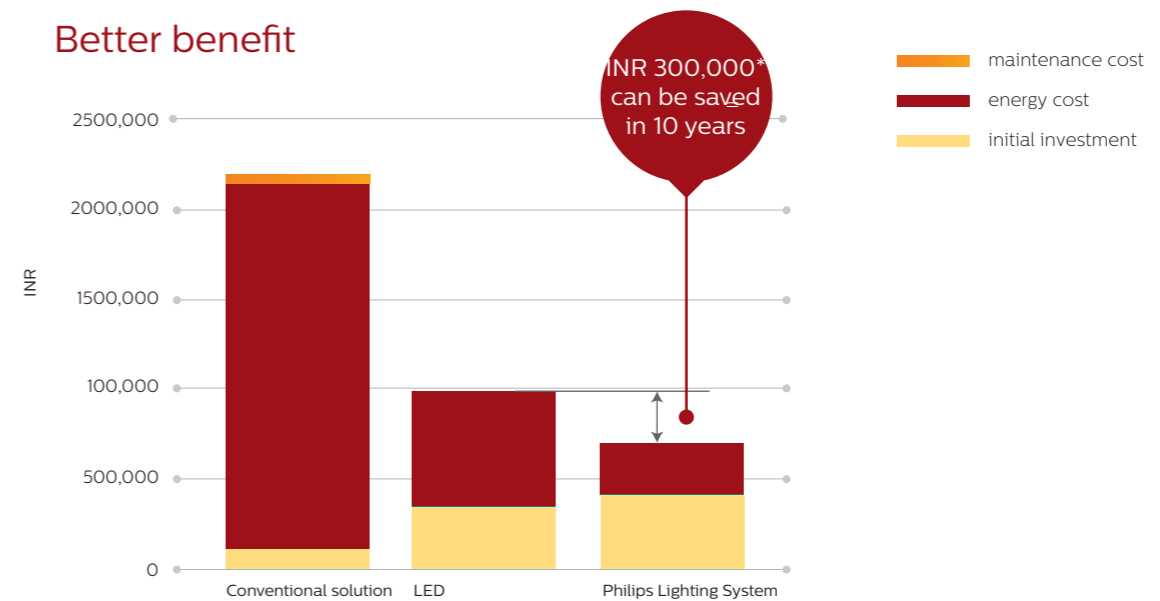
Philips Lighting system replacing HID solution vs LED luminaire without control replacing HID solution.

ROI period of system and LED luminaires without control is 2.27 and 2.45 respectively. By comparison, it is easy to conclude that the system has decreased 2 months of ROI period

Better ROI



Better benefit



Lighting **Services**

Value beyond illumination

We at Philips Lighting believe in providing a solution rather than a product and that is why we make business-effective lighting solutions, a simple and streamlined process for our customers.

Your industry segment's needs are extremely familiar to us, so you can count on us to reliably deliver or help coordinate any – or all – parts of the lighting solution you want, from concept design and detailed audit to complete lifecycle services. When you partner with Philips Lighting as an end to end solution partner, you're assured of results that give you maximum business impact and a committed lighting quality with minimum hassle and risk.

We focus on delivering specific solution concepts that effectively address a variety of these industry segment's most pressing lighting needs in terms of operational efficiency, sustainability, enhanced safety, increased revenue and shopper experience.

Delivering the agreed business benefits across the lifecycle of the delivered solution warrants a strong service commitment and a process driven approach to maximize the ROI and also enhance the life of your Lighting Asset deferring your CAPEX investment. That is why we at Philips Lighting have defined a suite of service offerings to complement and support your lighting investment.

Philips Lighting representatives are available whenever you need them to make sure your solution performs as expected.

Why choose Philips?

A lighting service that fits your business needs

We listen and understand your needs



Global presence and local experience delivering multi-tiered support



One-stop shop: solutions and services across the lighting value chain



World-class innovation capabilities and deep application and system expertise



Proven record of quality and reliability – no unpleasant surprises

Range of value-adding services

Choose the combination of services you need



Lighting Academy

Taking the **lead in lighting**

Philips Lighting Academy is a special initiative of Philips India Limited. It was set up in late-2011 to foster multi-level learning on lighting theory, design, innovation and application in the company's internal and external stakeholders.

With digitization transforming lighting technologies and forcing paradigm changes in the ways lighting had been perceived and transacted for years the world over, it had become imperative to refresh traditional lighting knowledge and acquire new knowledge on digital technologies.



Philips Lighting Academy brings simple, user-friendly e-learning, completely free, on its website on handpicked lighting subjects:

- Introduction to lighting theory and application
- Understanding LED technology
- Lamps – Incandescent, Halogen and Fluorescent
- Introduction to luminaires

“Winning Together” – a Philips Lighting Academy exclusive

“Winning together” is a learning program specially conceived and designed primarily for architects, designers and electrical consultants. It brings easy online learning on a wide and comprehensive array of lighting subjects, ranging from LED technology, lamps and luminaires to creative lighting, architectural lighting and sustainability, convenience.

“Winning Together” also brings an exclusive series of webinars by Indian and Global experts, designed and developed for a select audience on such topics as:

- Green Lighting Solutions
- Choosing your LED Products
- Standards and Lighting Design
- Intelligent Lighting System
- Light & Sustainability

The Academy’s training tools:

- Publications
- Online standalone learning modules
- Special online certifications by Philips Lighting Academy for standalone and short-term programs
- Webinars/ webcasts/ e-classrooms
- Exclusive live classroom sessions – a huge library of recorded lectures and webinars

Learning from Philips Lighting Academy is easy, affordable and fun. To know us better, visit us at www.lighting.philips.co.in/connect/Lighting_Academy or write to us at LiteAcademy.India@philips.com

Customer **Testimonials**

Table of Contents

Case Study	Pg
Elecon Engineering, Anand, India	98
Whirlpool, Faridabad, Haryana, India	100
PPS Detva, Slovakia	102
VR's maintenance hall, Oulu, Finland	104

Elecon Engineering

Anand, India

"We wanted to use only the best available lighting brand at our integrated factory complex at Anand. Our choice was Philips."

- J K Upadhyay, Head-Strategic Business Unit



GreenLED



Cirrus



LED Post Top



SYSTEM ASSY

CHECK RIGHT BY RESPONSIBLE
NO
DENTED / SCRATCHED
CABINET LOADING
ON
ASSEMBLY CONVEYER

Whirlpool

Faridabad, Haryana, India

Enabling error free
manufacturing through
optimum lighting levels



LEDtube



PPS Detva

Detva, Slovakia

"The company PPS Group located in Detva, Slovakia, is aware of its responsibilities for the environment. A new lighting installation was therefore chosen to help to reduce the impact of such a production engineering environment. Philips LED technology has enabled us to ensure efficiency in our lighting installation, not only in operational and maintenance cost savings, but by blowing a fresh wind into the production engineering floor."

- Pavol Šimkovic, CEO of PPS Group Inc.



GentleSpace

VR's maintenance hall

Oulu, Finland

“When selecting, it was important to consider an energy saving lighting solution as well adjustability. The halls are used around the clock, so it's not possible to set predefined times for the lights to switch on and off.”

- Jussi Kivikoura, Project Manager, VR



GentleSpace gen2



Pacific LED

South**Philips Lighting India Ltd,**

Temple Towers, 5th. Floor,
Old no. 476, new no. 672,
Anna Salai, Nandanam,
Chennai 600 035
Tel :- 91 44 6650 1000
Fax :- 91 44 6650 1075
Email : lighting.india@philips.com

Philips Lighting India Ltd,

Philips Innovation Campus
Manyata Tech Park, Nagavara
Bengaluru-560045
Tel : 080-4189 0000
Fax :- 080 6692 9930
Email : lighting.india@philips.com

Philips Lighting India Ltd,

6-3-1109 / I / P/ 103, 3rd floor
Jewalpwani Towers,
Rajbhavan Road,
Somajiguda, Hyderabad
Tel :- 040 6646 7676 / 4825
Fax :- 040 6678 7974
Email : lighting.india@philips.com

West**Philips Lighting India Ltd,**

Technopolis Knowledge Park,
Mahakali caves road,
Chakala, Andheri East,
Mumbai 400093
Tel :- 91 22 6691 2000
Fax :- 91 22 6691 2389 / 6691
2398
Email : lighting.india@philips.com

Philips Lighting India Ltd,

602, Heritage Tower, 6th floor,
Behind Visnagar Co-op Bank,
Near Gujarat Vidyapith,
Usmanpura,
Ahmedabad, Gujarat
Tel :- 91 79 2754 0708
Fax :- 91 79 2754 0666
Email : lighting.india@philips.com

East**Philips Lighting India Ltd,**

7, Justice Chandra Madhab Road,
Kolkata 700 020
Tel : 91 33 2486 7621-24
Fax : 91 33 2486 8318
Email : lighting.india@philips.com

North**Philips Lighting India Ltd,**

9th Floor, DLF - 9B, DLF Cyber City
DLF Phase 3, Gurgaon 122002
Tel :- 91 124 460 6000
Fax :- 91 124 460 6666
Email : lighting.india@philips.com

Philips Lighting India Ltd,

8th floor, DLF - 9B, DLF Cyber City
DLF phase 3, Gurgaon 122002
Tel :- 91 124 460 6000
Fax :- 91 124 460 6666

Contact customer service

executive at

1800 102 2929 (Toll free)

1860 180 1111, 0124- 4291111

“Standard call rates apply”

For more information contact us at lighting.india@philips.com or call at **1800 102 2929**

www.lighting.philips.co.in

